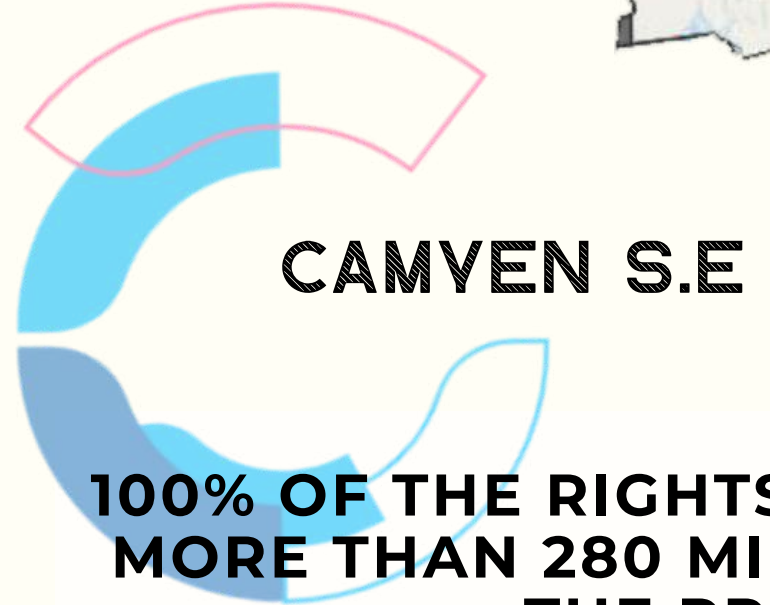
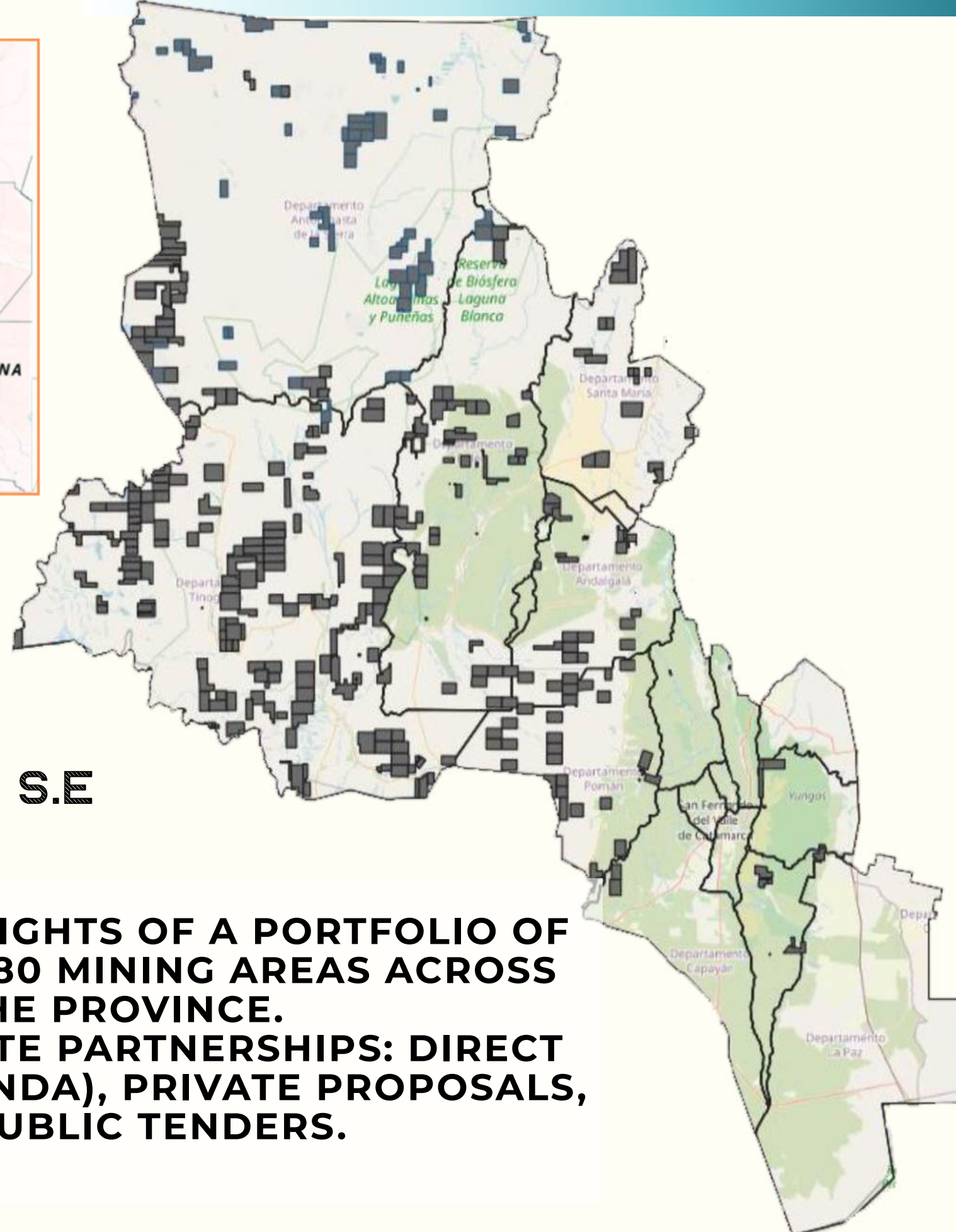
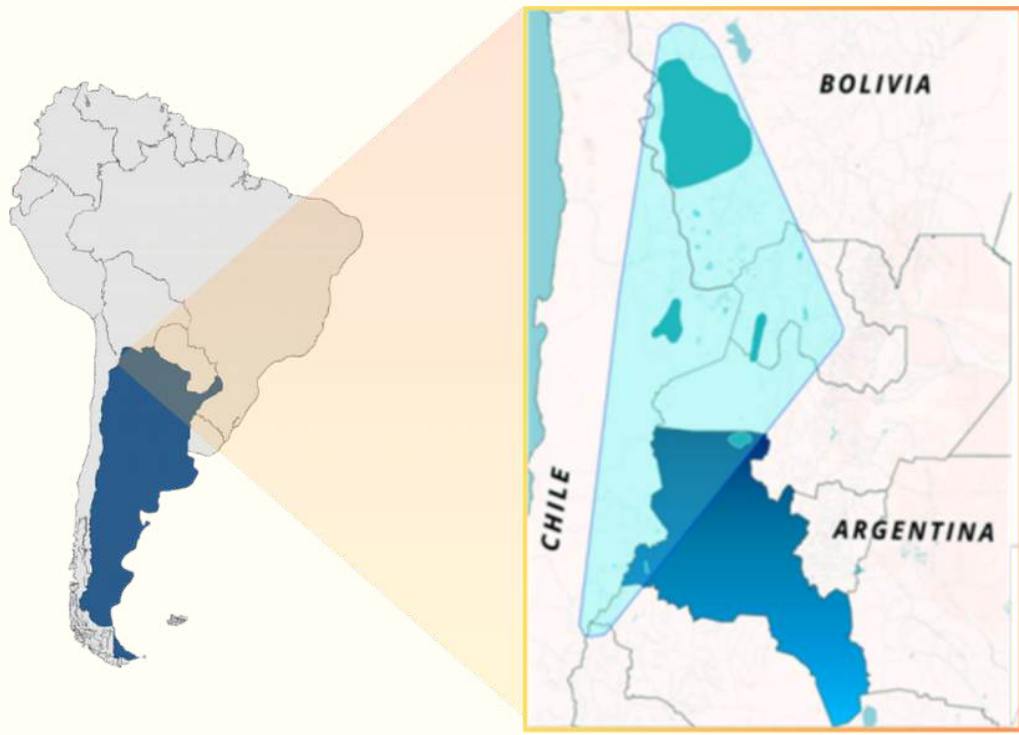
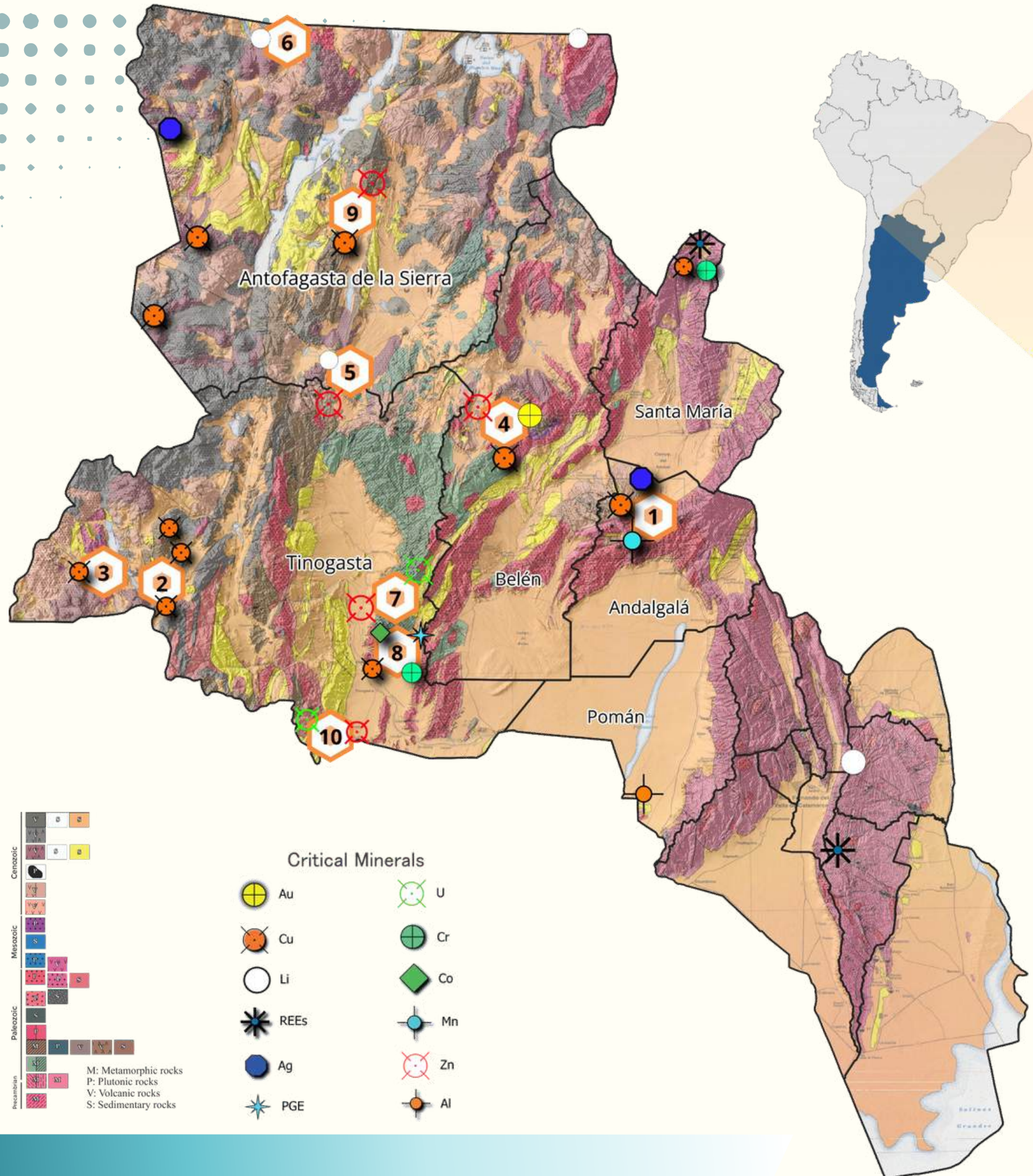


# CATAMARCA MINING

INVESTMENT OPPORTUNITIES

# CATAMARCA ONE OF ARGENTINA'S LEADING MINING HUBS



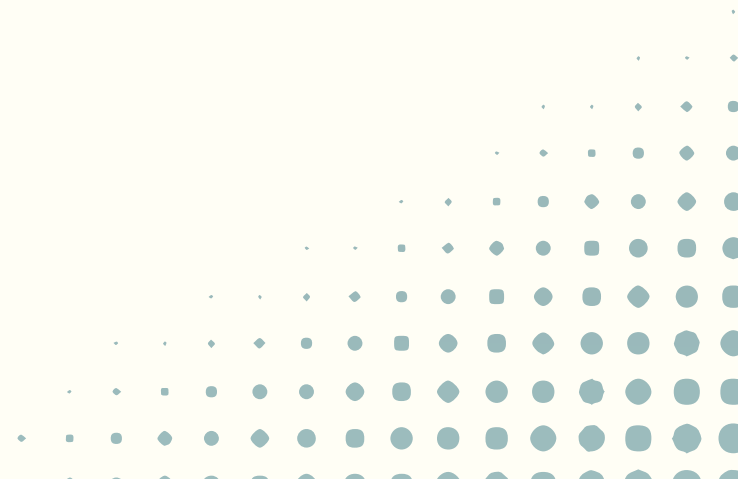
**100% OF THE RIGHTS OF A PORTFOLIO OF MORE THAN 280 MINING AREAS ACROSS THE PROVINCE.**

**PUBLIC-PRIVATE PARTNERSHIPS: DIRECT NEGOTIATION (NDA), PRIVATE PROPOSALS, OR PUBLIC TENDERS.**

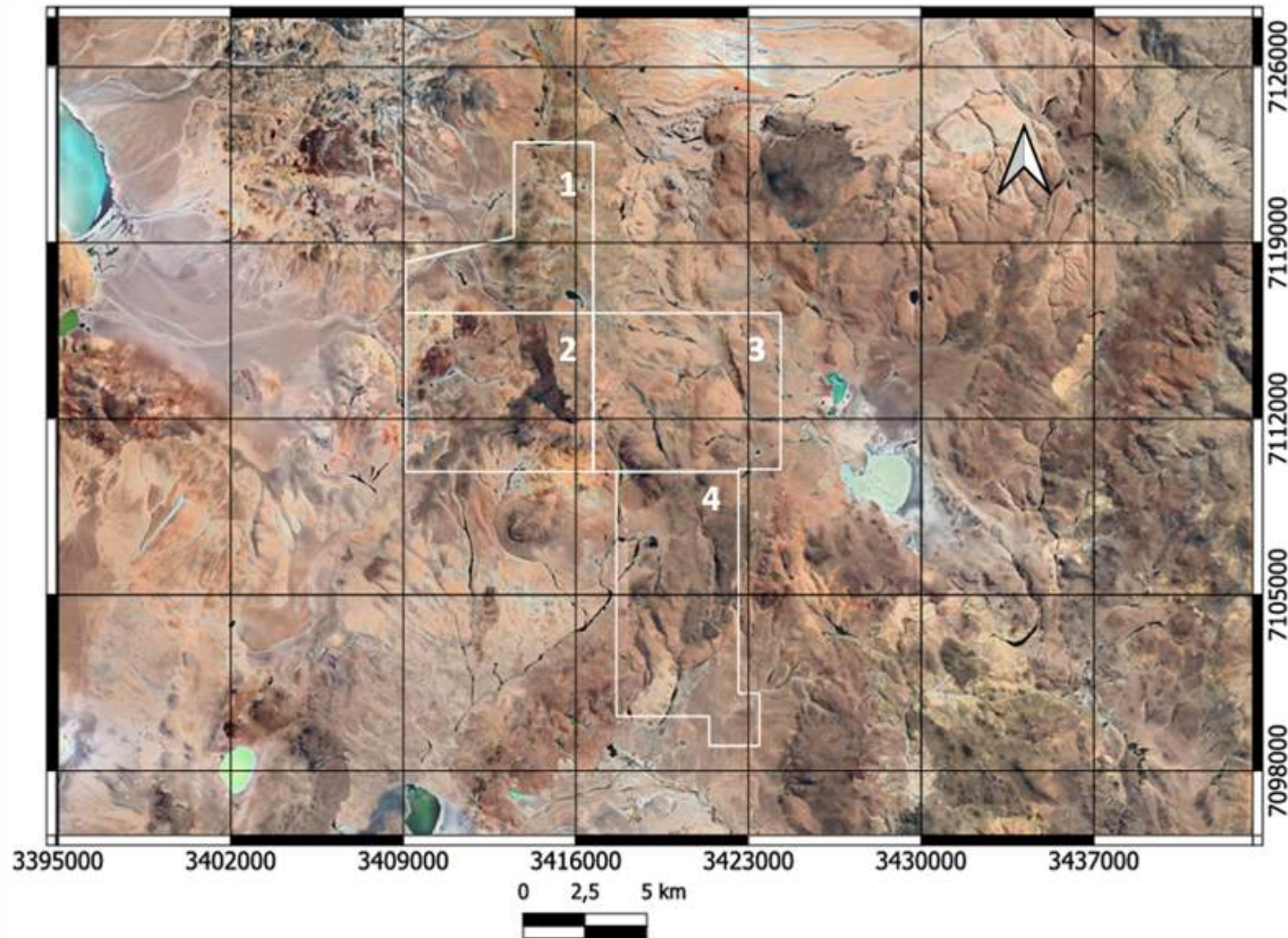


# **LITHIUM: POWERING THE FUTURE**

*Catamarca's World-Class Lithium Projects*



# CERRO GALÁN & LAGUNA APAROMA



## Location & Scale

- 17,997.53 ha at the SE of Cerro Galán super-volcano. Antofagasta de la Sierra department.

## World-Class Lithium Source Potential

- A magmatic system with extremely high lithium grades (up to 10,000 ppm).
- This system is the verified source feeding the highly productive Salar del Hombre Muerto (Fénix Project).

## In-House Geothermal Energy Synergy

- A significant geothermal system with a high-temperature reservoir (up to 187°C) and a confirmed potential of up to 11 MWe.
- Ideal for binary cycle power generation to run lithium extraction and processing.

## Logistics & Access

- ~63km from PR43 and El Peñón town

## Status & Opportunity

- Target Mineral: **Lithium & Geothermal energy**

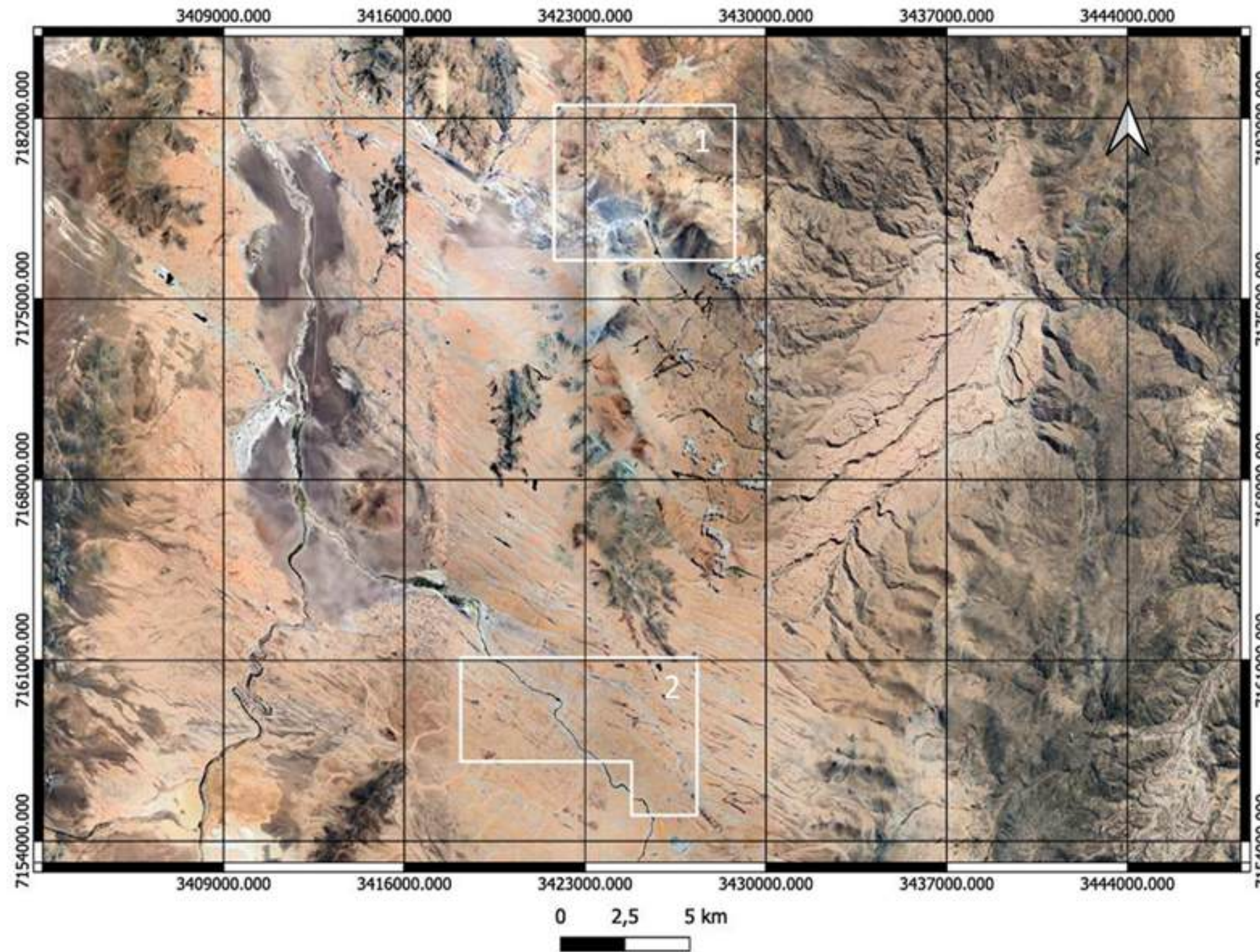
1- CATEO EX-2022-01750430 - 3286.91 HA.

2- CERRO GALAN I - 4796.74 HA.

3- CATEO EX-2022-02075449 - 4779.96 HA.

4- LAGUNA APAROMA I - 5133.92 HA.

# EL LÍMITE I Y CATEO



## Location & Scale

- 8406,16 ha total at the SE of Salar del Hombre Muerto. Antofagasta de la Sierra department.

## World-Class Lithium Source Potential

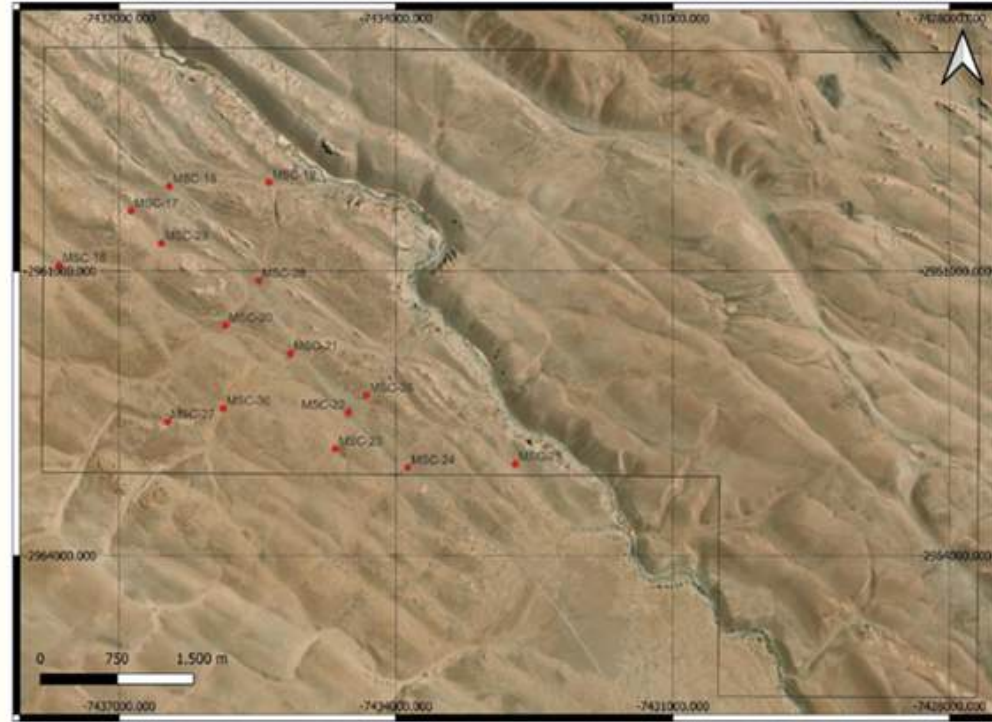
Both properties share a set of structural, lithological, hydrogeological, and geochemical evidence that supports the potential for the presence of subsurface lithium:

- Structurally controlled endorheic basin.
- Structural control favoring fluid circulation.
- Association with a large-volume felsic volcanic system (Cerro Galán), rich in compatible elements (Li, B, F).
- Anomalous lithium values determined in surface sampling: 400 ppm.
- Low-resistivity geoelectrical anomalies detected through VES (Vertical Electrical Sounding), compatible with the presence of brines.
- Proximity to Salar del Hombre Muerto, of regional relevance in lithium production.

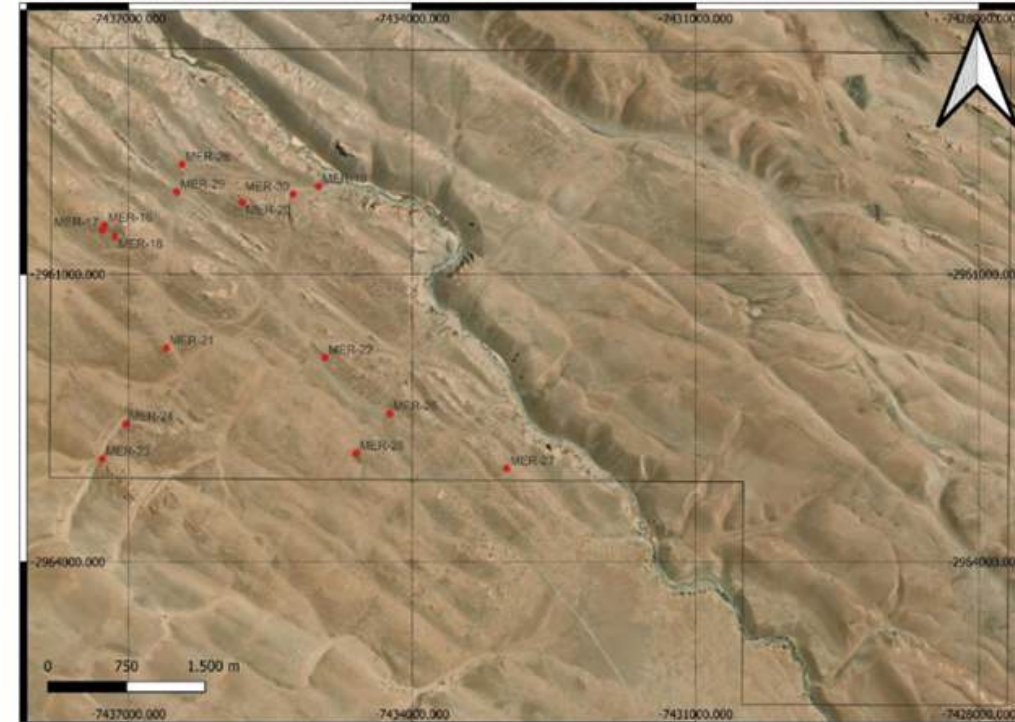
**1- CATEO - 4200.00 HA.**

**2- EL LIMITE I - 4206.16 HA.**

# EL LÍMITE I Y CATEO



SEDIMENT SAMPLES



ROCK SAMPLES



VES

## Recent Exploration Overview (2024)

### Targeting High-Potential Lithium Targets

Comprehensive geological studies completed in 2024 by CAMYEN SE in collaboration with Kgori Punku Consultora SRL.

- **Surface Geochemistry:**

- 15 Rock Chip Samples collected for lithological validation.
- 15 Stream Sediment Samples to identify regional dispersion patterns.

- **Advanced Geophysics:**

- 10 Vertical Electrical Soundings (VES) strategically executed across the SW sector.
- Targeting the subsurface beneath the Los Patos River basin.

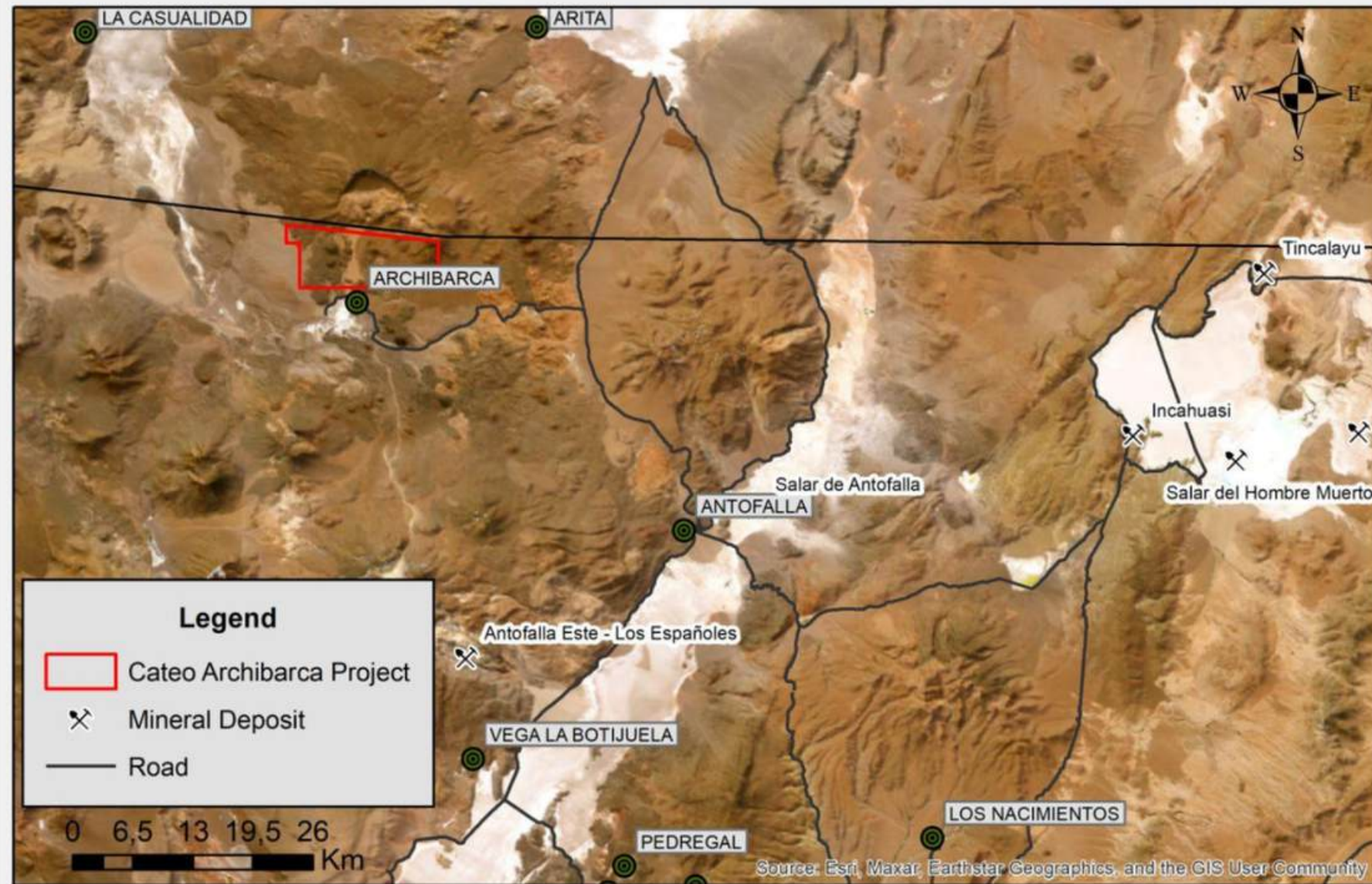
### Technical Confirmation of Brine-Bearing Potential

- **Discovery of Target Electro-layers:** VES 7 and VES 9 have successfully identified low-resistivity layers.
- **High Compatibility:** Resistivity values are consistent with the presence of brackish water/brines.
- **Deep Aquifer Potential:** Data suggests the existence of expanded saline aquifer levels at depth, mirroring high-production regional models.
- **Investor Takeaway:** Physical evidence confirms the existence of a conductive system (brines) beneath the property, significantly de-risking the project.

**Drill-Ready Phase:** Moving toward an exploratory drilling program to test geochemistry and confirm lithium concentrations in the detected aquifers.

EL LIMITE I - 4206.16 HA.

# CATEO ARCHIBARCA



## Project Overview & Location

- Location: Situated at the foot of the Archibarca Volcano, near the town of Antofalla, Catamarca.
- Elevation: Located at 4,100 meters above sea level in a typical Puna saline environment.
- Tenure: Large-scale property covering 7,610.77 ha.

## A Premier "Mining Neighborhood"

The property is surrounded by high-profile projects and intensive exploration activity, providing strong regional validation:

- Greenko Group (India): Conducting a major exploration campaign on adjacent properties, currently in the resource quantification stage.
- Marhen Lithium (United Mining): Significant investment in the neighboring Río Grande Project.
- Active Partnerships: Proximity to NeoSynergy (operating on CAMYEN-owned land), AMG Lithium, and Ultra Lithium (Laguna Verde).

## Strategic Value

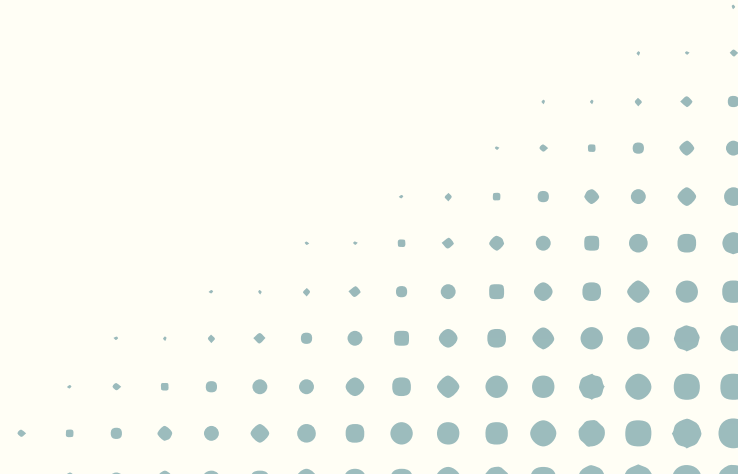
- Infrastructure Advantage: Positioned in an area with established exploration logistics and technical data from multiple international operators.
- **Neosynergy S.A. – Greenko Group (2023–2025)**
  - 31 VES (Vertical Electrical Soundings / Geoelectrical prospecting)
  - Conductive layers compatible with brine
  - Estimated thickness: up to 150 m (VES 8)
  - 2 exploratory drill holes
  - Project in resource estimation stage (cubication)
  - The VES results are directly extrapolatable to the Archibarca Prospect due to hydrogeological continuity and spatial adjacency.

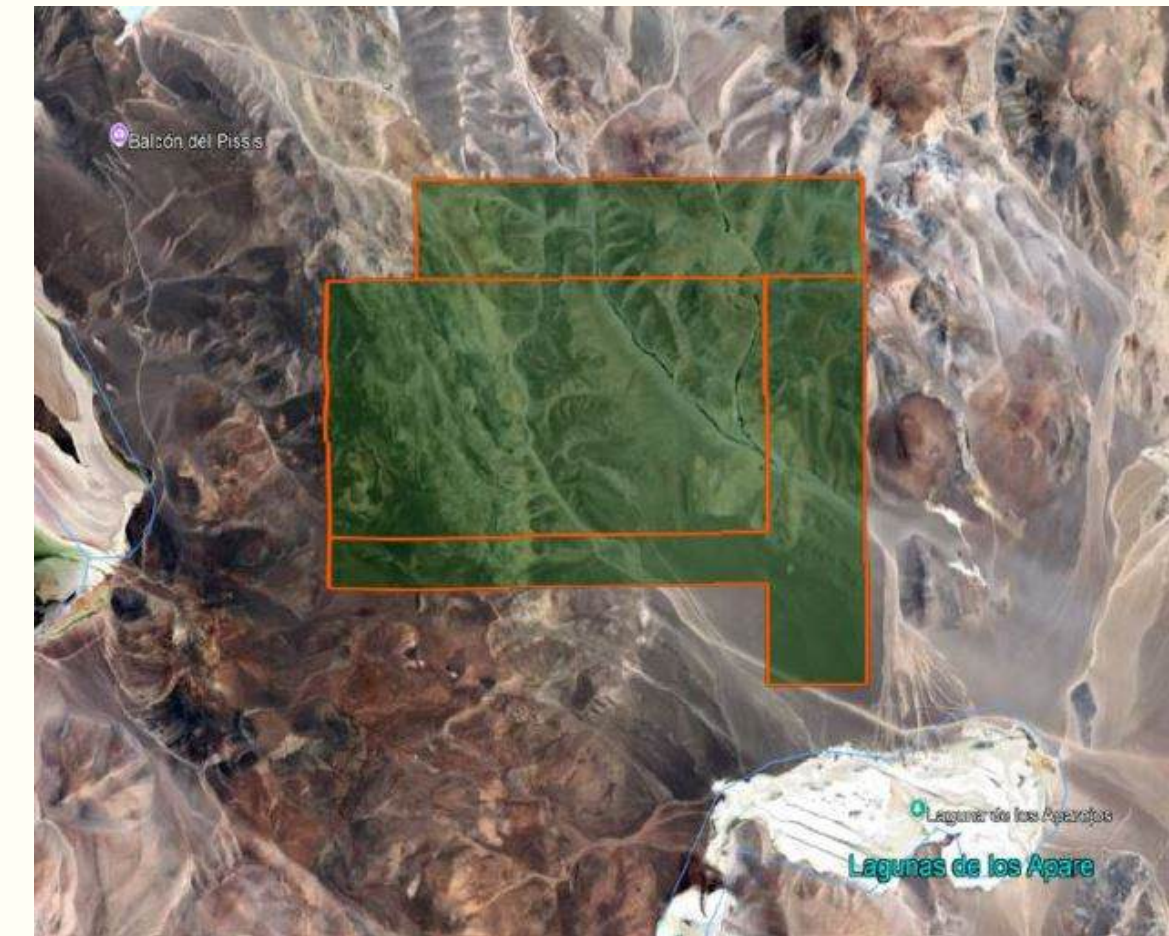
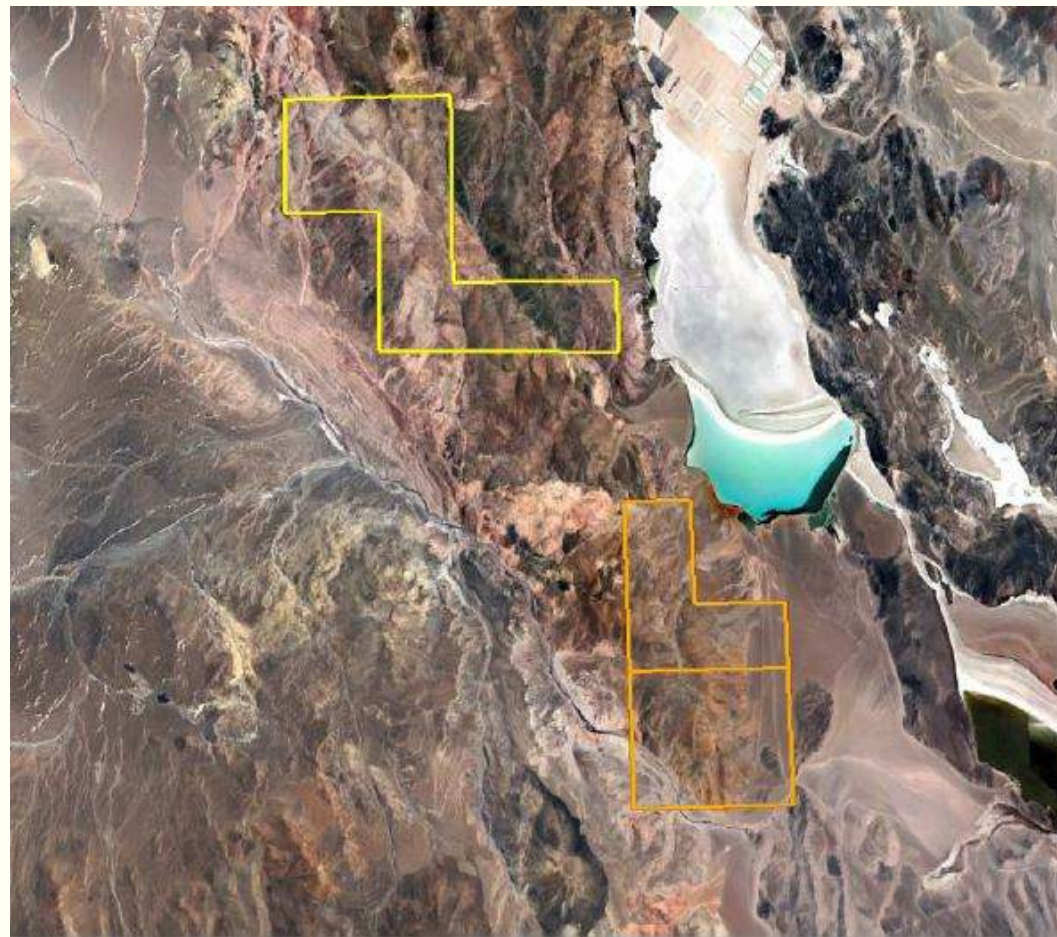




# CRITICAL METALS: DRIVING GLOBAL INDUSTRY

*A Diversified Portfolio of High-Potential Projects*





### Premier Geological Location:

- Located on the highly prospective Valle Ancho Lineament, a major corridor known to host large-scale **Porphyry Copper-Gold** and **Epithermal Gold** systems.
- Large land package covering 5,829 ha in Southwest Tinogasta.

### De-Risked by Major Adjacent Discovery:

- The project is located directly adjacent to the Valle Ancho Project, successfully explored by the company NGEx Minerals.
- NGEx's extensive work, including over 3,000 meters of drilling, has confirmed the high potential of this trend.

### Proof of Concept - A Significant Drill Intercept:

- A key result from the adjacent property confirms the system's potential, with a drill intercept of 596.5 meters **@ 0.50% CuEq** (0.23% Cu, 0.37 g/t Au, and 1.40 g/t Ag). The discovery hole ended in mineralization at 600.5 meters, meaning the system remains open at depth.

### Regional Geological Context

- The projects are located along the Valle Ancho Lineament (VAL), a trans-crustal lithospheric discontinuity that segments the Andean orogeny.
- The area sits on the Laguna Amarga Metamorphic Complex, providing the structural permeability necessary for large-scale mineralizing events.
- **Metallogenic Potential:** This corridor represents the direct Argentine extension of the world-class Maricunga Gold Belt.
- **Geochemical Signature:** Presence of adakitic lavas (Sr/Yb up to 135) indicates deep crustal recycling and high fertility for Porphyry Cu-Au systems.

**PUBLIC TENDER OPPORTUNITY**  
**BOTH PROJECTS WILL BE OPEN FOR PUBLIC TENDER WITHIN THE NEXT 30 DAYS.**

### Scale:

- Large land package covering 5,160 ha across three mining properties.

### De-Risked by Previous Exploration:

- Systematic geological mapping and geochemistry have already identified multiple high-potential zones.
- Drill-ready targets supported by existing data from previous operators (Pampa Exploración S.A.'s work, 2019-2020).

### Deposit Potential:

- North: Strong evidence for a large-scale **Porphyry Cu-Au-Mo** system, supported by drilling which intercepted geochemical anomalies of Mo, As, and Zn.
- South: Known high-grade **Skarn-type copper mineralization** at the Descubridora deposit.





### Confirmed High Grades:

- Initial prospecting returned high-grade surface samples up to **2.09 g/t Gold** and **40 g/t Silver**.

# HIGH-GRADE GOLD: CULAMPAJÁ DISTRICT

Large-scale vein systems with visible gold



-  **Location:** Belén Department
-  **Size:** 7,300+ Hectares
-  **Geology:** Quartz vein systems up to 1.5m thick
-  **Assays:** Historical sampling (Gutiérrez vein) up to 18.9 g/t Au

# CULAMPAJÁ: FOUR DEFINED EXPLORATION TARGETS

## TARGET 1: VETA LA ROSARIO



- 5.4 hectares
- E-W vein, 200m strike, 1.8m thick
- Strong Phyllic alteration & Vuggy silica
- Visible native gold

## TARGET 2: SUBCIRCULAR BODY



- 2 hectares, stockwork veining
- Sericite alteration with localized Argillic (kaolinite)
- Copper carbonates (malachite, azurite)

## TARGET 3: ANTIGUA MINA EL DESPECHE



- High-grade fault zone (335°N)
- Galena, Hematite, Chloritized Biotite
- Strong alteration in fault core

## TARGET 4: EUSEBIO / MARÍA MAGDALENA



- 4.78 hectares
- Propylitic alteration (chlorite + epidote + calcite)
- Indicators of outer dome of deep porphyry system

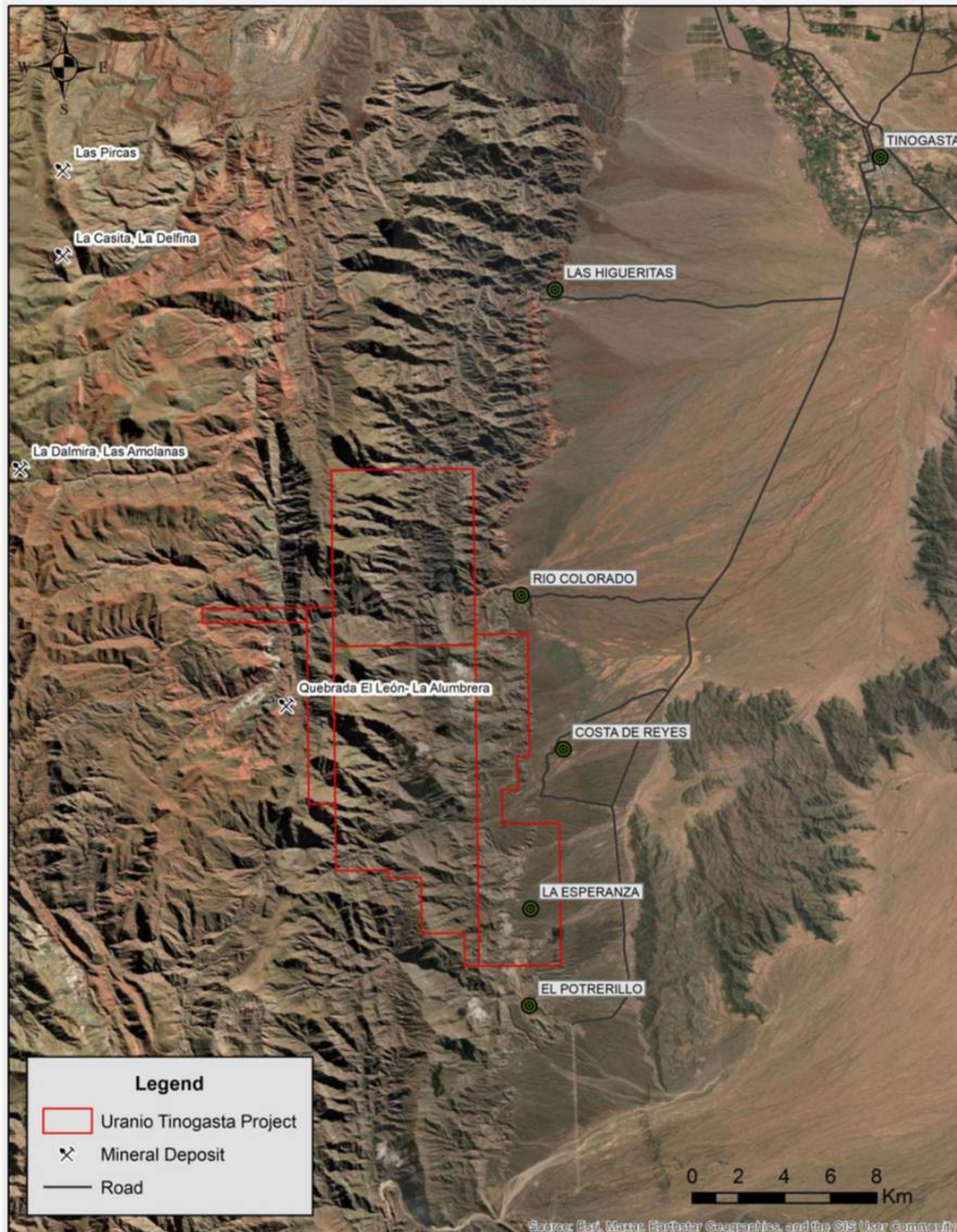




## **URANIUM: A KEY PLAYER IN NET ZERO CARBON ENERGY**

*Catamarca's potential in the future of nuclear energy*

# SEDIMENTARY RED-BED DEPOSITS (TINOGASTA DISTRICT)



## Location & Tenure

- Location: Situated in the southern region of the Tinogasta Department, Catamarca.
- Tenure: Consists of five strategic properties covering approximately 4,615 hectares.
- Scale: Features a continuous 17 km uranium-bearing belt within the Famatina System.

## Geological Setting

- Host Rocks: Hosted within the Paganzo Group and the Río Colorado Formation (Upper Cretaceous).
- Deposit Type: Red-Bed type, characterized by stratiform and epigenetic mineralization.
- Genetic Model: Uranium is leached and redeposited in reducing environments, using organic matter and carbonaceous debris as primary chemical traps.

## Mineralization & Grades

- Key Minerals: Primarily carnotite and uraninite.
- Uranium Grades: Historically reported values between 0.1% and 0.7% U<sub>3</sub>O<sub>8</sub> (equivalent to 1–7 kg/t).
- Polymetallic Upside: Locally associated with high-value concentrations of 1–3% Copper (Cu) and 200–500 g/t Silver (Ag).

Geochemical Footprint: Strong anomalous signature of U-V-Cu.



- Total Area: 14,615 Hectares
- Deposit Type: Red Beds
- Data Source: Extensive historical database from National Atomic Energy Commission (CNEA)

## Grades

Vein Systems	Up to 1.3% Uranium
Sandstone Bodies	> 0.6% U <sub>3</sub> O <sub>8</sub>
Associated Minerals	Copper (1-3%), Silver (200-500 g/t)

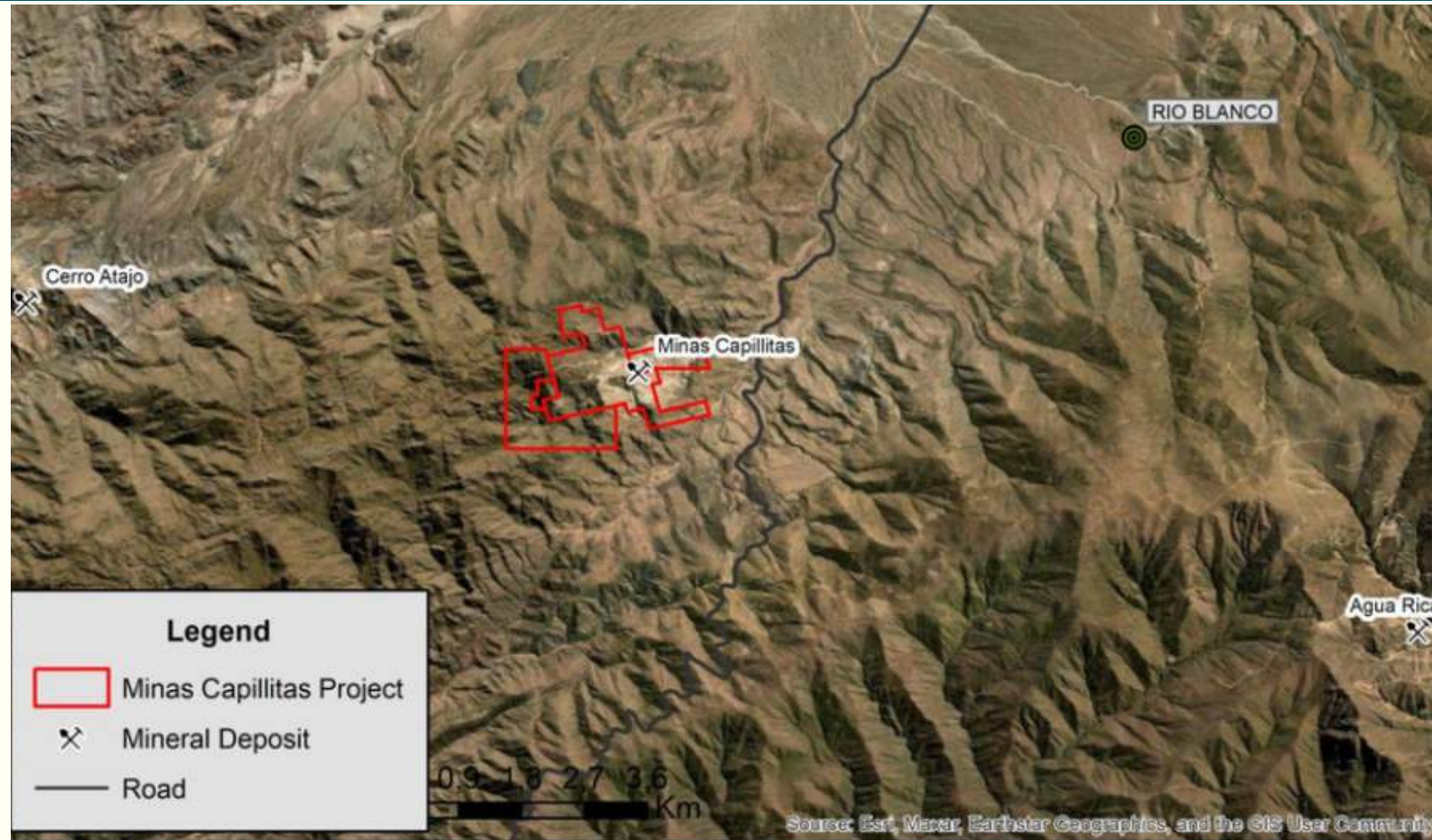




**CAMYEN**

**Mina Capillitas  
(Cu-Pb-Zn-Au-Sn-Mn)**

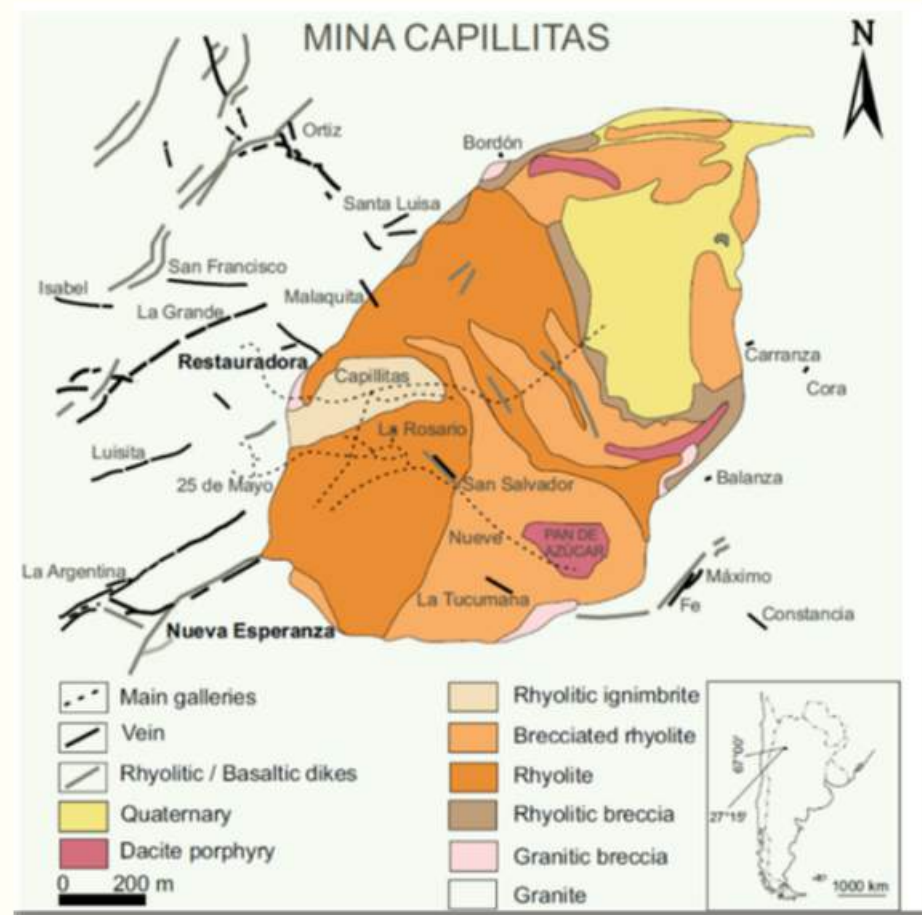
# Mina Capillitas (Cu-Pb-Zn-Au-Sn-Mn)



- Capillitas is a complex polymetallic epithermal vein-type deposit located in Andalgalá, which has been exploited intermittently for gold since Inca times.
- From the mid-19th century to the mid-20th century, numerous Argentine and British companies explored this deposit in search of copper, gold, and silver.
- Over the last 70 years—up to the present day—the deposit has been mined for rhodochrosite ( $\text{MnCO}_3$ ).
- CAMYEN owns the mining rights and extracts the gangue mineral “rhodochrosite,” which it markets as a semi-precious stone.

The deposit features two polymetallic vein systems:

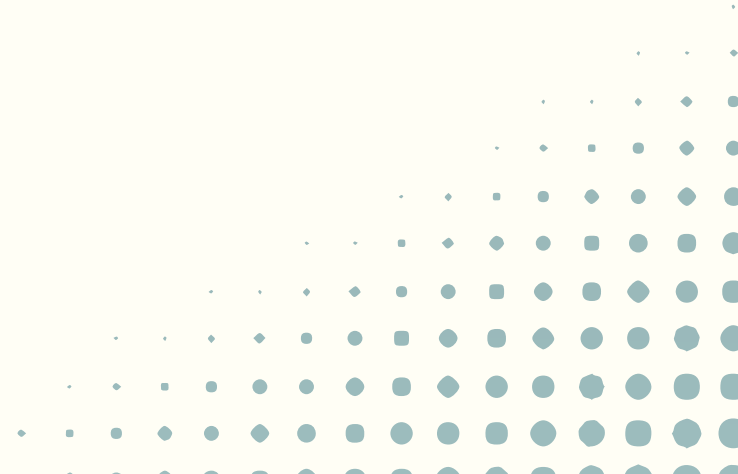
- ENE–WSW System: Veta La Grande, Rosario, Restauradora II, Argentina, and Nueva Esperanza.
- ESE–WNW System: Restauradora IV, Veta 9, and 25 de Mayo.
- The proven depth of the veins reaches 410 meters, with an average thickness of 0.60 meters.
- It has proven reserves according to JICA and Soruco (2010).
- Average grades: 5 g/t Au and 217 g/t Ag.
- Total reserves: 1,036,959 t





## **NEW GOVERNMENT POLICY TO STIMULATE NEW INVESTMENTS**

*Mining is a key sector for further developments in the country*



# A NEW FRAMEWORK FOR MINING INVESTMENT



## Legal & Fiscal Certainty

- **Modern & Agile Mining Code:** Digital processes, clear tenure rights ("first come, first served"), and perpetual concessions with continued activity.
- **International Transparency Standards:** Committed to the Extractive Industries Transparency Initiative (EITI) since 2023, ensuring full transparency.
- **Incentive Regime for Large Investments (RIGI):** A 30-year stability framework for large investments, featuring:
  - Reduced Income Tax (25%).
  - Exemption from import/export duties.
  - Guaranteed access to foreign exchange markets and profit remittance.

## Robust Environmental Governance

- **Certified Supervision:** The Ministry of Mining's environmental management is internationally certified under ISO 9001:2015.
- **Proactive Environmental Management:** Clear Environmental Impact Assessment (EIA) processes, continuous monitoring (water, air, soil), and robust closure plans.
- **Commitment to Social Value:** Mining Trusts that ensure generated wealth directly benefits local communities and strengthens development.

# BIOCEANIC RAIL CORRIDOR



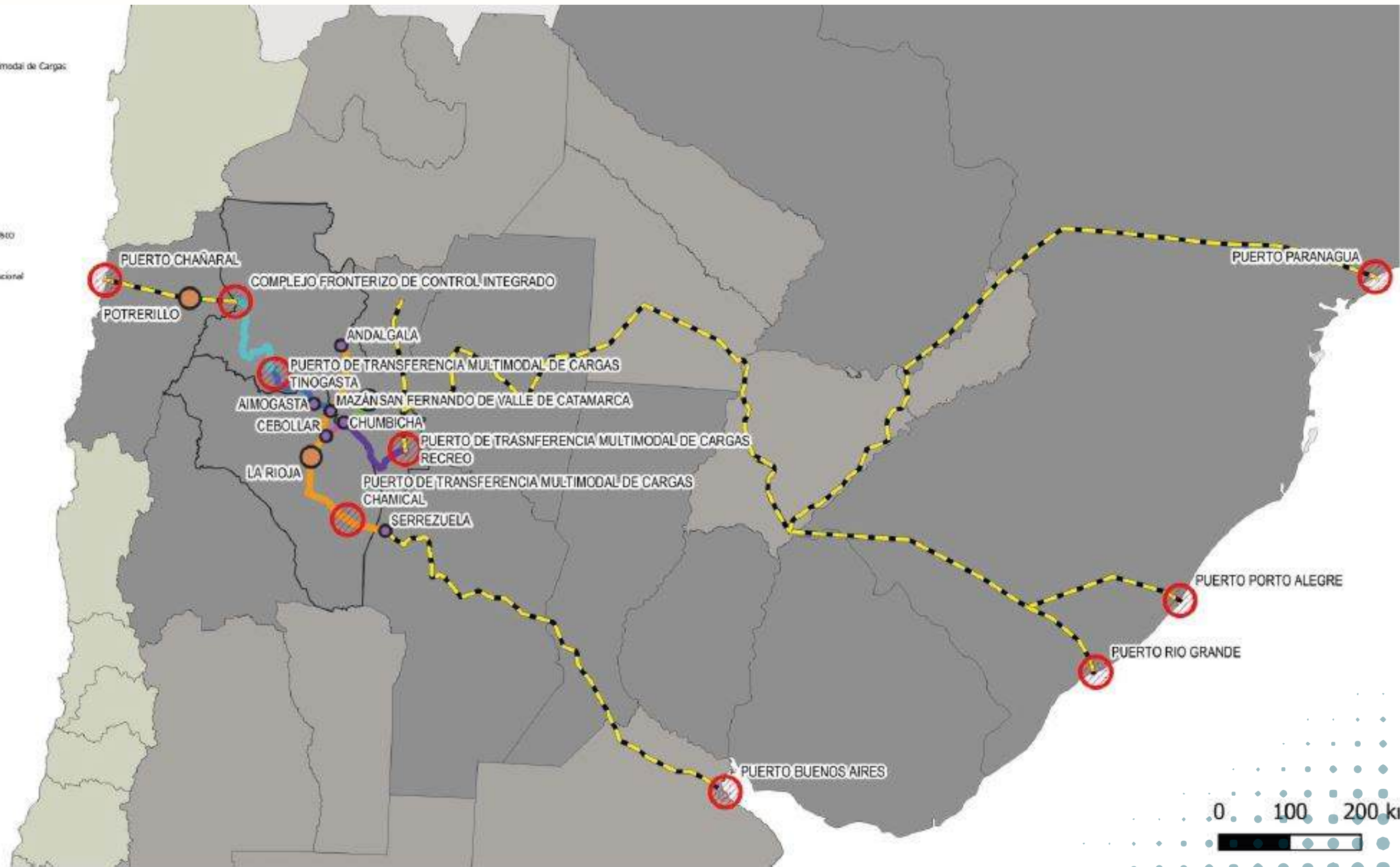
NOA - CENTRO  
Catamarca - República Argentina

- REGIONAL AND GLOBAL INTEGRATION
- ECONOMIC DEVELOPMENT AND VALUE ADDITION
- LOGISTICAL EFFICIENCY AND COMPETITIVENESS
- STRENGTHENING BILATERAL TIES

# BIOCEANIC RAIL CORRIDOR NOA-CENTRO

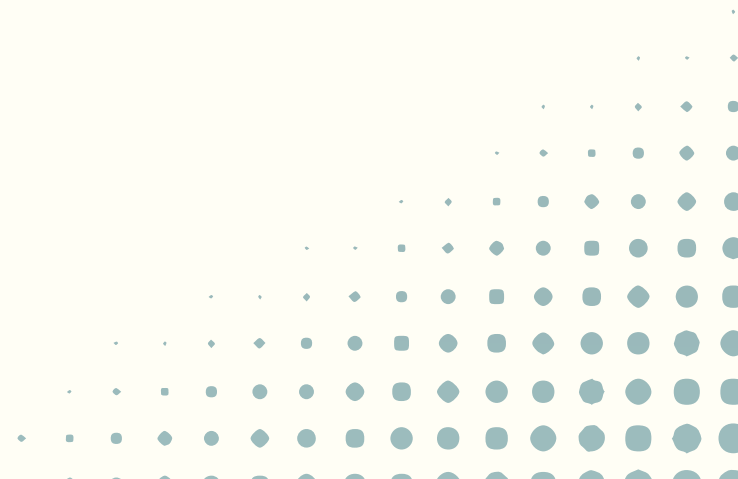


- REFERENCIAS**
- puntos\_interes:**
- Puerto de Transferencia Multimodal de Cargas
  - Capital
  - Localidad
- Tramos FFCC**
- Andalgalá-Serrezuela
  - Chumbicha-Cebollar
  - Chumbicha-Pantariño
  - Recreo-Chumbicha
  - Tinogasta-Paso de San Francisco
  - Villa de Mazán-Tinogasta
  - FFCC Interprovincial - Internacional





## ***MAIN TAKE AWAYS***



# A HUB OF WORLD-CLASS PROJECTS & STRATEGIC PARTNERSHIPS



## Your Strategic Partner on the Ground (CAMYEN S.E)

- **Public-Private Partnership Model:** Catamarca's state-owned mining and energy company, CAMYEN S.E, is empowered to partner with international firms to de-risk and accelerate projects.
- **Actionable Opportunities:** A portfolio of ~400 mining properties with immediate opportunities currently in tender (e.g., Filo de las Vicuñas / Gold Nugget - Cu/Au).

## Global Leaders Are Investing Now

- **Glencore (MARA - Copper):** One of the world's largest copper projects-
- **Rio Tinto (Sal de Vida - Lithium):** A new \$638M investment to reactivate and modernize operations.
- **Posco (Sal de Oro - Lithium):** A global leader in battery materials.
- **Galan Lithium (HMW - Lithium):** A \$217M investment formally approved for RIGI benefits, with production planned for 2026.

# Mining Companies Operating in Catamarca



Greenko



World Metals Alloys



Lake Resources



Zijin Mining



YPF



KABIL-Khanij Bidesh India Limited



GALAN LITHIUM LIMITED



POSCO FUTURE M



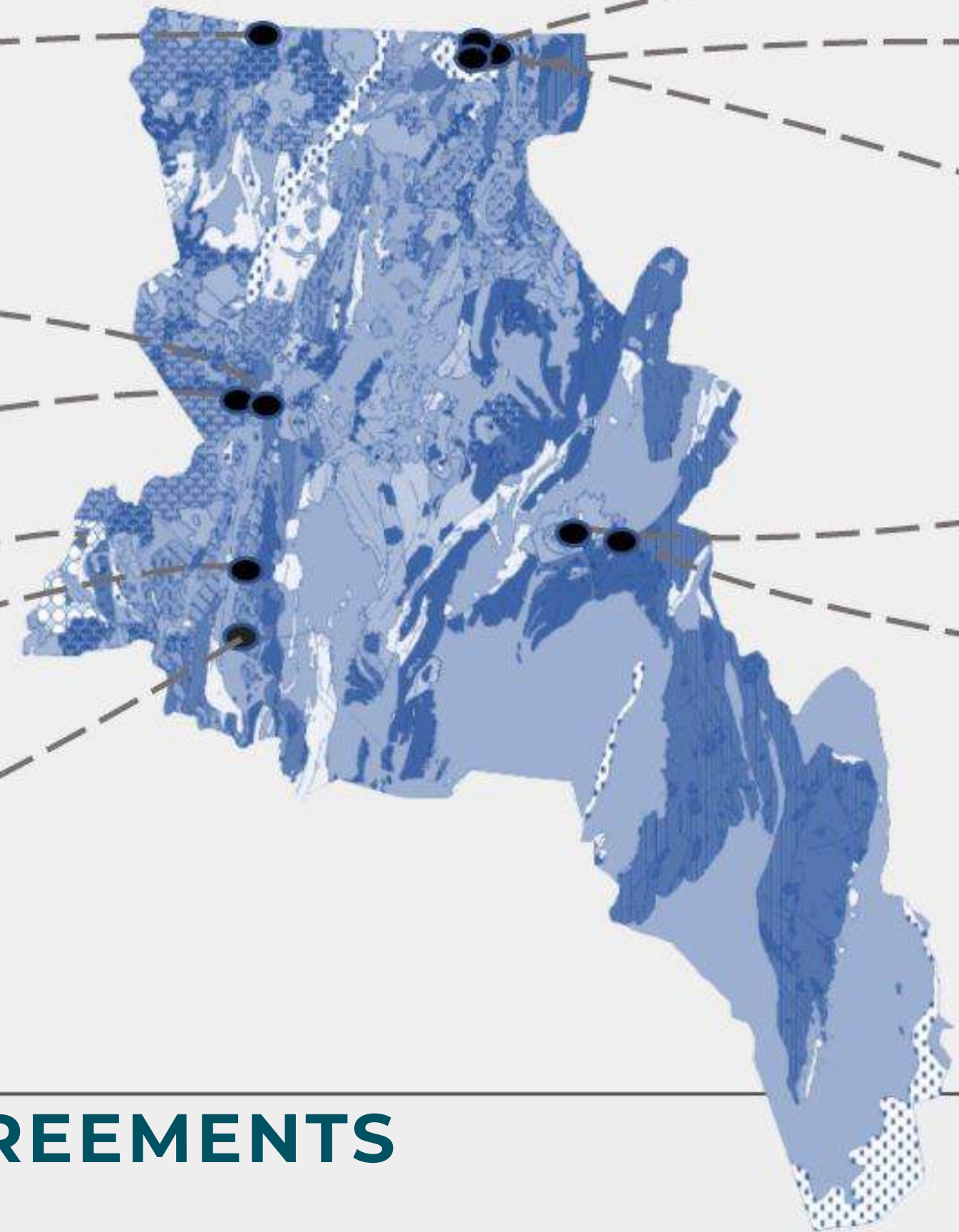
Rio Tinto Group



Proyecto MARA



YMAD - Yacimientos Mineros de Agua de Dionisio



## EXPLORATION AGREEMENTS



# Contact us

**Agustina Lencina, PhD**

**(+54) 9 383 451 6920**

**[alencina@catamarca.gov.ar](mailto:alencina@catamarca.gov.ar)**

**[agustinalencina@camyen.com.ar](mailto:agustinalencina@camyen.com.ar)**

**[camyen@camyen.com.ar](mailto:camyen@camyen.com.ar)**

---

**Web site**

**[www.camyen.catamarca.gob.ar](http://www.camyen.catamarca.gob.ar)**



**Muchas Gracias**